

A photograph of a modern school interior. Three children are sitting on a curved, colorful sofa (yellow, orange, red, and grey) in a room with large floor-to-ceiling windows. The windows offer a view of a lush green landscape with trees, a playground with a red slide, and a basketball court. The children are using laptops. The text 'Margaretta' is overlaid in large white font on the left side of the image.

# Margaretta

Local School District

Design Kickoff Meeting



12/17/2020

FANNING  
HOWEY

# Agenda

---

- **Introductions**
- **General Project Overview**
- **Overall Project Schedule of Stages**
- **Specific Schedule Issues**
- **Suggested Meeting Participants**
- **Program Verification (PV) Status**
- **Next Steps**



# Introductions

---



**Steve Wilczynski**  
Executive Director



**Dan Obrynba**  
Project Executive



**Rod Wiford**  
Project Manager



**John Gladden**  
Project Designer

# Introductions

---

- **Name**
- **Role (teacher, parent, administrator, etc.)**
- **Vision for project, what do you see as a successful new educational facility?**



# Executive Core Team

---

## Overall Project Management

Meets monthly

Monitor progress of project, budget and schedule

High-level project decisions

Superintendent, Treasurer, 2 Board members, etc.



# Facilities Core Team – Here's Your Role!

- Facilities Core Team
  - Bi-weekly meetings
    - 3 months +/-
  - Overall building design
  - Process from here
  - Commitment
  - If you must miss
    - Review notes
  - Website





# General Project Overview

# Project Overview

---

PK12

grades

PK5

elementary school

6-12

middle school/high school

163,622

total square feet

1,045

students

\$50M+

preliminary project budget/lfi



# Site

---

- Preliminary land survey
- Preliminary borings
  - Unsuitable soils
- ODOT Access
- Phase I ESA
- Geotechnical SSI
- Fields
  - Athletic
  - Vo-Ag
- Forestry program
- Wetlands program



# What Have We Learned – Online Survey

---

- Appears necessary (at least 50% Agree or Strongly Agree)
  - Collaboration space (extended learning areas) outside of classrooms in all grade levels (70%)
  - There should be more outdoor learning opportunities (81%)
  - There should be space to support STEM or STEAM programs available in all grade levels (82%)
  - There should be maker spaces available in all grade levels (66%)
  - Team teaching with adjacent classroom is needed at all grade levels (65%)
  - A separate entrance for after-hours activities is needed (85%)
  - A two-story solution has significant support (90%)

# What Have We Learned – Online Survey

---

- Appears to need more investigation (less than 50% Agree or Strongly Agree)
  - Configuration of administration offices
    - Centralized with shared resources (46%)
    - Separated into two areas (i.e. elementary and middle school/high school) (45%)
  - Configuration of media center
    - Less focused on printed materials and more focused on being a flexible space for learning (46%)
    - Traditional with books and furniture (29%)
    - Distributed throughout the academic areas (19%)

# What Have We Learned – ES Visioning

---

- Appears necessary (average ranking of more than 5 on a 9 point scale)
  - Visual connectivity and transparency between spaces is desired. (6.1)
  - Extended learning areas are desired. (7.3)
  - Outdoor learning spaces are desired. (7.0)
  - Distributed media center space is desired. (6.2)
  - Student huddle spaces are desired. (5.2)
  - Mobile furniture for seating is desired. (7.1)
  - Garage doors (or large openings) in classrooms are desired. (5.5)
  - Soft and flexible furniture is desired. (6.4)

# What Have We Learned – ES Visioning

---

- Appears necessary (average ranking of more than 5 on a 9 point scale)
  - Mobile bookcase storage is desired. (7.4)
  - Daylighting is desired. (6.2)
  - Internal courtyard(s) is desired. (5.3)
  - Sinks outside of restrooms. (6.2)
  - Celebrating history (7.5)
  - Individual elementary restrooms (68%)
  - Learning model – Transitional to Transitional/Transformational



# What Have We Learned – ES Visioning



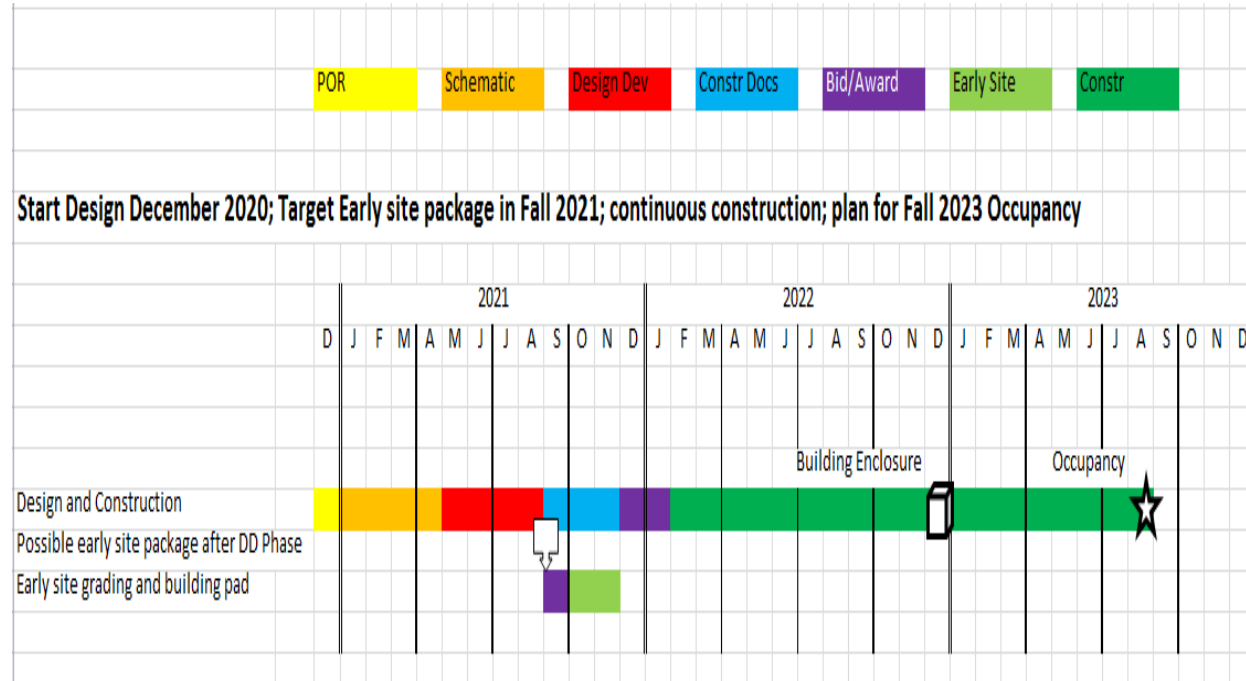
- Appears to need more investigation (mid-level ranking on a 9 point scale)
  - Stairs as a learning space (4.5)
  - Informal platform space (4.2)



# Overall Project Schedule of Phases

# Preliminary Overall Project Schedule of Phases

- 1 year of Design/1.5+ years of Construction
- Current Phase
  - Program Verification (PV)
- Early Site Package
- Tentative occupancy Fall 2023





# Specific Meeting Questions

# Meeting Questions



- Typical design meeting location - ?
- Typical design meeting day – Thursday
- Typical design meeting time – 10:00 a.m.
- Regular Board of Education meeting date/time – Third Monday, 6:30 p.m.
- Special Board of Education meetings - ?





# Suggested Meeting Participants (see handout)



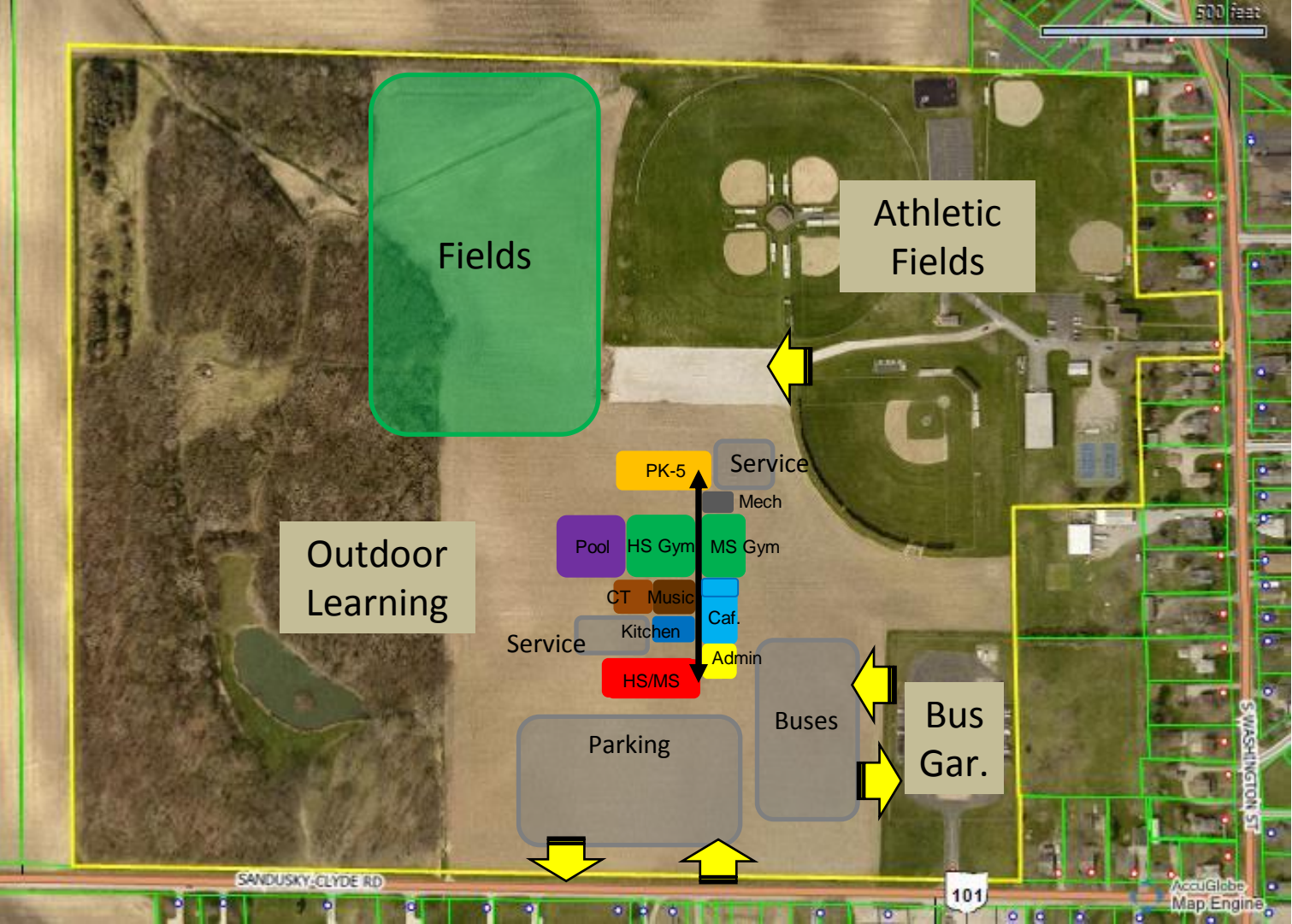
# Program Verification (PV) Status

## CORE SPACE ONLY

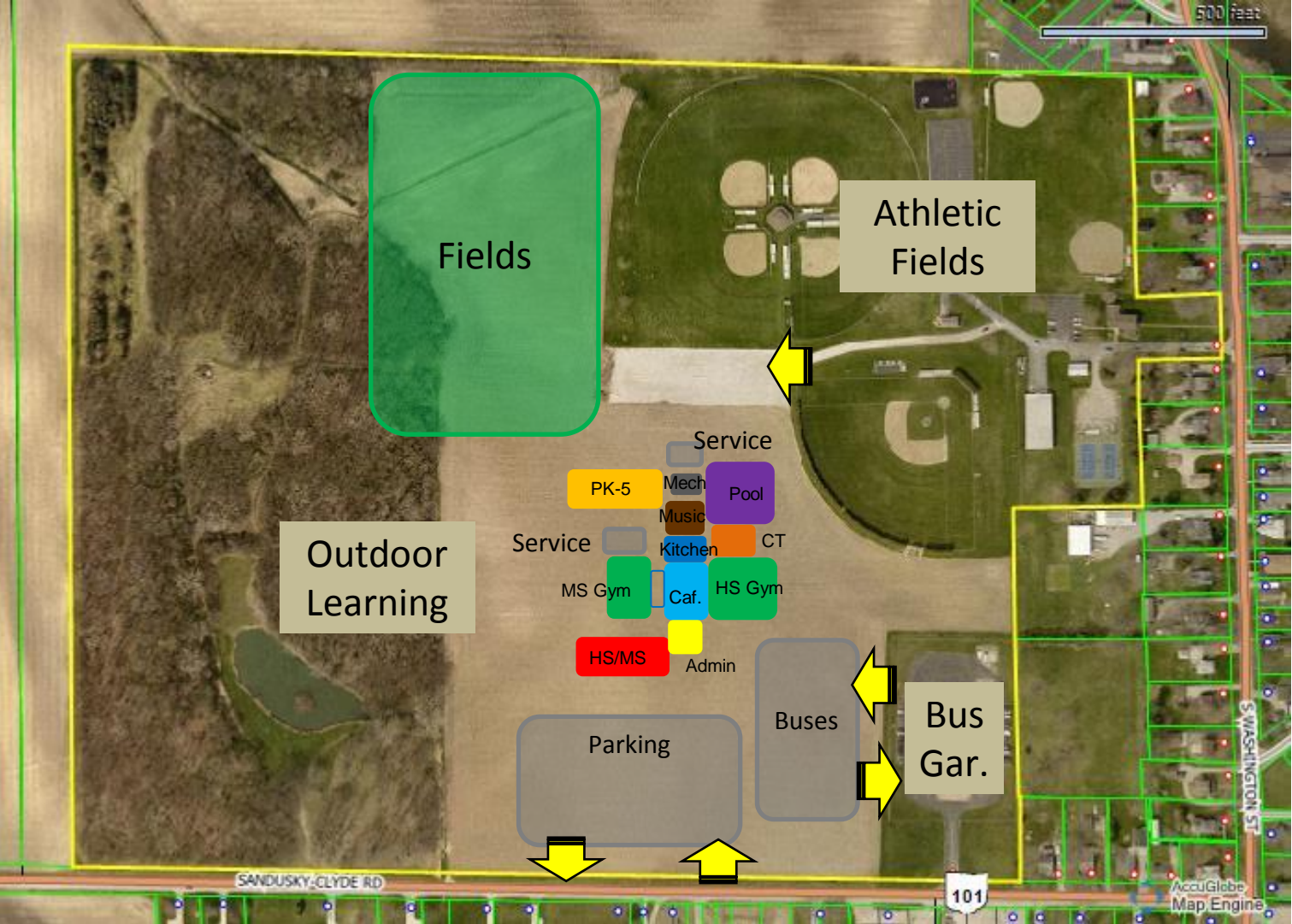
Core Spaces		Students Type E			Students Type A & B			Combined Total
		NEW	LFI	TOTAL	NEW	Existing*	TOTAL	
E/M/H/CT-AC	Academic Core	44,250	0	44,250	0	0	0	44,250
E/M/H/CT-SE	Spec. Ed./Student Svs.	5,800	0	5,800	0	0	0	5,800
E/M/H/CT-AD	Administration	4,080	0	4,080	na	na	na	4,080
E/M/H/CT-MC	Media Center	4,151	0	4,151	na	na	na	4,151
E/M/H-VA	Visual Arts	2,680	0	2,680	na	na	na	2,680
E/M/H-MU	Music	4,990	0	4,990	na	na	na	4,990
E/M/H-TE	Technology Education	5,050	0	5,050	na	na	na	5,050
E/M/H-BE	Business Education	1,820	0	1,820	na	na	na	1,820
E/M/H-FCS	Family and Consumer Science	1,400	0	1,400	na	na	na	1,400
E/M/H-PE	Physical Education	24,570	0	24,570	na	na	na	24,570
E/M/H/CT-SD	Student Dining	9,158	0	9,158	na	na	na	9,158
E/M/H/CT-FS	Food Service	3,961	0	3,961	na	na	na	3,961
E/M/H/CT-CU	Custodial	400	0	400	na	na	na	400
Net Core Space		112,310	0	112,310	0	0	0	112,310
E/M/H/CT-BS	Building Services	35,098	0	35,098	na	na	na	35,098
Total Core Space		147,408	0	147,408	0	0	0	147,408
Construction Factor (11%)		16,215	0	16,215	0		0	16,215
Actual Gross Core Space Developed		163,622	0	163,622	0	0	0	163,622
Minus existing co-funded Oversize Area from Master Plan								na
Adjusted Existing Area			0			0		
Total Adjusted Gross Square Footage Developed (without Oversize Area)				163,622			0	163,622
Maximum Gross Core SF Co-Funded				146,220			3,514	149,734
Difference				17,403			(3,514)	13,888

Program Verification (PV) Phase





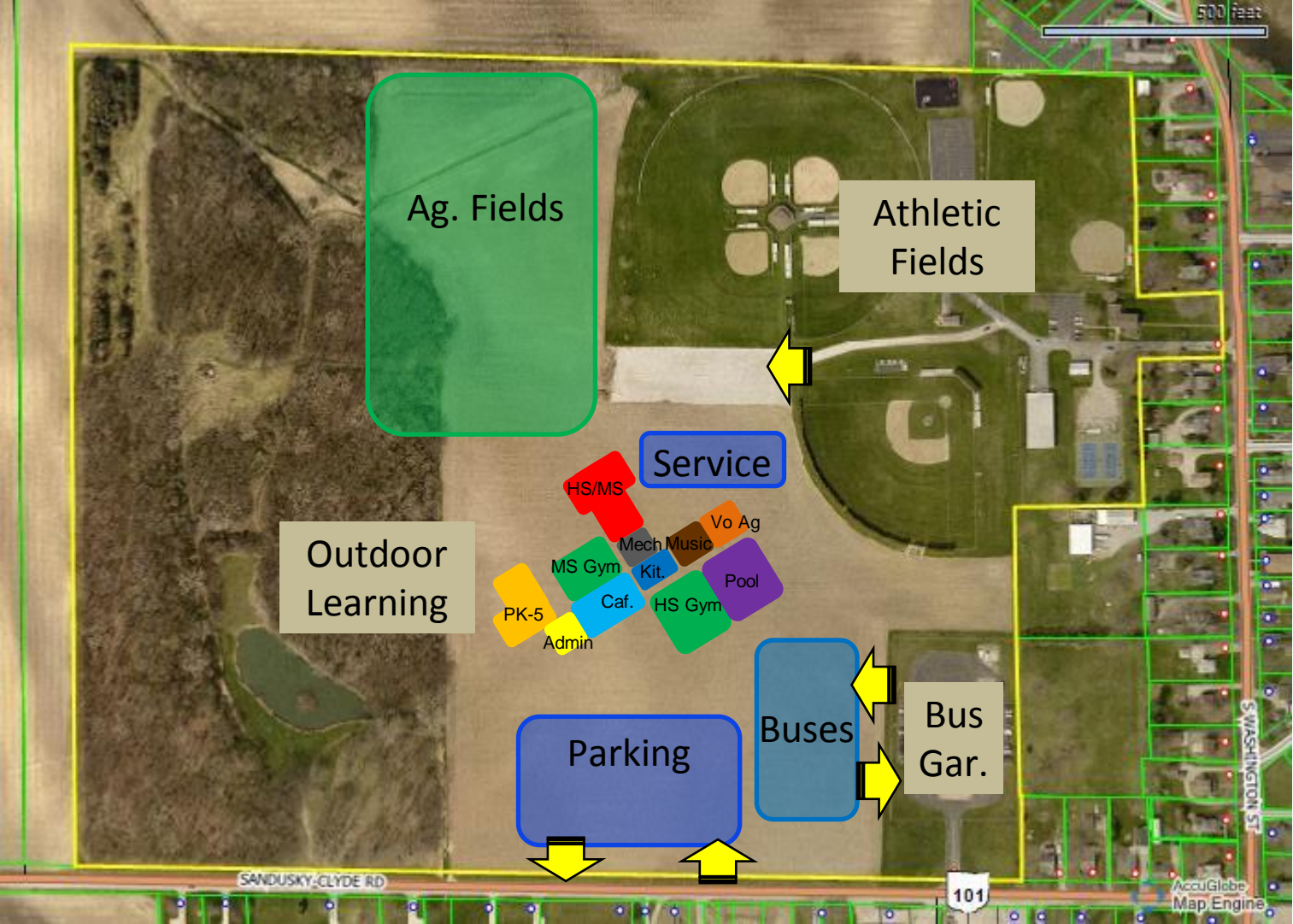












# Next Steps...

---

**Middle School/High School Visioning**

**Program Verification Meeting with Building Principals**

**Studies (Traffic, Phase I Environmental Site Assessment,  
Geotechnical Subsurface Investigations)**

**Facility Tours**

**Bellevue Elementary and Middle School**

**Clyde Middle School**

**Port Clinton Middle School/Port Clinton High School**





# Thank You!